

WHEATLAND  
ELECTRIC COOPERATIVE

# NEWS



## Wheatland Electric Co-op, Inc.

### Board of Trustees

**William Barnes**  
President  
**Wes Campbell**  
Vice President  
**Mark Arnold**  
Treasurer  
**Stacey Addison-Howland**  
Secretary  
**Dan Bonine**  
Trustee  
**Vic Case**  
Trustee  
**Katie Eisenhour**  
Trustee  
**Bob Hiss**  
Trustee  
**John Kleysteuber**  
Trustee  
**Mike Thon**  
Trustee

### District Offices

**Garden City—620-275-0261**  
2005 W Fulton, P.O. Box 973  
Garden City, KS 67846  
**Great Bend—620-793-4223**  
2300 Broadway, P.O. Box 1446  
Great Bend, KS 67530  
**Harper—620-896-7090**  
906 Central, P.O. Box 247  
Harper, KS 67058  
**Leoti—620-375-2632**  
N Hwy 25, P.O. Box 966  
Leoti, KS 67861  
**Scott City-Main—620-872-5885**  
101 Main St., P.O. Box 230  
Scott City, KS 67871  
**Syracuse—620-384-5171**  
206 1/2 N Main  
P.O. Box 1010  
Syracuse, KS 67878  
**Tribune—620-376-4231**  
310 Broadway  
P.O. Box 490  
Tribune, KS 67879

## FROM THE MANAGER

# It's Annual Meeting Time

I'd like to cordially invite you to **WHEATLAND ELECTRIC COOPERATIVE, INC.'S 71ST ANNUAL MEETING ON APRIL 24, 2019, AT THE GREAT BEND EVENTS CENTER, 3111 10TH STREET IN GREAT BEND, KANSAS.** We look forward to visiting with you, the membership, and enjoying good fellowship. We also will take the opportunity to show you what Wheatland has accomplished in the past year, and what we are planning in the upcoming year and beyond.

Wheatland will announce and present **14 \$1,000 SCHOLARSHIPS** to the winners of our scholarship program. The scholarship recipients are children of Wheatland Electric members. We will also announce the **TWO WINNERS OF THE ELECTRIC COOPERATIVE YOUTH TOUR** to Washington, D.C., and **TWO WINNERS OF THE COOPERATIVE YOUTH LEADERSHIP CAMP** in Steamboat Springs, Colorado.

As I mentioned in last month's article, the Annual Meeting is the opportunity for you to exercise one of the greatest benefits of being a member of Wheatland Electric, by **VOTING FOR THE UPCOMING BOARD OF TRUSTEES.**

Wheatland Electric is not owned by far away investors. It's run by a democratically elected board of trustees, a board who is given the privilege to serve because of your vote. **OUR TRUSTEES ARE MEMBERS OF YOUR**

**COMMUNITY.** They are concerned with the issues you face every day because they face them too.

Also, this year, Wheatland Electric is trying **SOMETHING NEW!** On the same day as we are having the Annual Meeting in Great Bend, we will be conducting **CONCURRENT ANNUAL MEETINGS** at all our other office locations: **SCOTT CITY, LEOTI, SYRACUSE, HARPER, FINNEY COUNTY (FULTON ST OFFICE) AND TRIBUNE.** The annual meeting will be **SIMULCAST AT EACH OFFICE.** The members in attendance at these satellite locations will be able to:

- ▶ Attend locally
- ▶ Nominate
- ▶ Vote
- ▶ Win a door prize (if selected)
- ▶ Enjoy provided lunch
- ▶ Receive an attendance gift

So please, make it a point to attend the **WHEATLAND ELECTRIC ANNUAL MEETING AT** any of the locations, and exercise your right to vote as a member of the cooperative.

Lunch will be provided for all in attendance (concurrent annual meetings included) along with an attendance gift and the chance to win great door



Bruce W. Mueller

Continued on page 16F ▶

**Operating Statement**

for year ended 12/31/2018 (Unaudited)

**Revenues**

Electric Operating Revenue 97,823,040

**Expenses**

Cost of Power 58,249,233

Operations & Maintenance 8,490,905

Administrative & General 8,993,625

Depreciation 8,987,071

Interest 7,315,197

Taxes 4,359,388

Other 41,081

**Total Expenses 96,436,500**

**Operating Margins 1,386,540**

**Non-Operating Items**

Interest Income 621,520

Loss from Subsidiaries (1) (1,290,577)

Other Capital Credits 920,032

Margins Without Sunflower/MKEC Capital Credits 1,637,515

Sunflower Capital Credits (2) 3,115,161

**Total Margins 4,752,676**

(1) Water and Broadband operations. (2) This amount is Wheatland's share of 2018 earnings of Sunflower Electric Power Corp. This allocation is not in cash and will be available to Wheatland's members at such time as it is paid out by Sunflower.

**Balance Sheet**

as of 12/31/2018 (Unaudited)

**Assets**

Electric Plant 307,532,556

Non-Electric Assets 73,082,366

Less: Depreciation (107,483,002)

Net Plant 273,131,920

Investments 90,650,182

Cash & Short-Term Investments 5,458,082

Receivables 10,634,145

Materials & Supplies 2,980,088

Prepayments & Other 4,777

Other Current Assets & Deferred 4,284,784

**Total Assets 387,143,978**

**Liabilities**

Long-Term Debt 218,403,595

Payables 44,964,137

Other Liabilities 8,170,426

**Total Liabilities 271,538,158**

**Equities**

Patronage Capital 114,570,748

Other Capital 1,035,072

**Total Equities 115,605,820**

**Total Liabilities and Equity 387,143,978**

# Official Notice of Annual Meeting for Wheatland Electric Members

The 71st Annual Meeting for the members of Wheatland Electric will be held Wednesday, April 24, 2019, at the Great Bend Events Center, 3111 10th St, Great Bend, Kansas.



Wes Campbell



Robert Hiss



William Barnes

A lunch will be served at 11:30 a.m. CDT. The business meeting will convene at 12:30 p.m. The following matters will be addressed:

- ▶ Reports of officers, trustees, committees and employees
- ▶ Voting on proposed bylaw amendment
- ▶ Election of trustees of the co-op
- ▶ Any other business which may come before the meeting
- ▶ Adjournment

The 2019 nominating committee consisted of the following members:

- ▶ **District 1 – ED CUPP**
- ▶ **District 2 – MILAN REIMER**
- ▶ **District 3 – DALE WETZEL**

- ▶ **District 4 – MARVIN GRABER**
- ▶ **District 5 – ROBERT BUERKLE**
- ▶ **District 6 – MATT HOISINGTON**
- ▶ **District 7 – KIM MILLER**

The following trustees have been nominated by the nominating committee for the position of trustee:

- ▶ **District 5 – WES CAMPBELL**  
106 Diamond Hill Drive  
Garden City, KS
- ▶ **District 6 – ROBERT HISS**  
2001 Broadway Ave.  
Great Bend, KS
- ▶ **District 7 – WILLIAM BARNES**  
719 S. Market St  
Caldwell, KS

Additional nominations may be made from the floor during the meeting.

Operating Statistics (Electric)	2014	2015	2016	2017	2018
Operating Revenue (Electric) (x 1000)	\$101,347	\$92,043	\$98,166	\$95,901	\$97,823
Energy Sales (kWh) (x 1000)	839,735	817,838	811,444	791,074	817,355
Average Revenue (\$/kWh)	\$0.1207	\$0.1125	\$0.1210	\$0.1212	\$0.1197
Cost of Power (x 1000)	\$66,163	\$58,545	\$59,033	\$56,464	\$58,249
Total Purchases (kWh) (x 1000)	884,996	859,192	854,492	829,031	854,876
Average Cost of Power (\$/kWh)	\$0.0748	\$0.0681	\$0.0691	\$0.0681	\$0.0681
Other Operations & Maintenance (x 1000)	\$16,852	\$17,026	\$16,647	\$16,041	\$17,526
<b>Total Operations &amp; Maintenance (x 1000)</b>	<b>\$83,015</b>	<b>\$75,571</b>	<b>\$75,680</b>	<b>\$72,505</b>	<b>\$75,775</b>
Gross Operating Margin (x 1000)	\$18,332	\$16,472	\$22,486	\$23,396	\$22,048
Gross Operating Margin (\$/kWh)	\$0.0218	\$0.0201	\$0.0277	\$0.0296	\$0.0270
Depreciation Expense (x 1000)	\$7,774	\$8,186	\$9,475	\$8,805	\$8,987
Property Taxes (x 1000)	\$3,452	\$2,499	\$2,956	\$3,470	\$3,416
Other Taxes (x 1000)	\$644	\$588	\$644	\$971	\$943
Interest Expense (x 1000)	\$4,764	\$5,029	\$6,040	\$6,708	\$7,315
Operating Margin (x 1000)	\$1,698	\$170	\$3,371	\$3,442	\$1,387

# Notice to Members of Proposed Bylaw Change

## Proposed Change to Article 4 Trustees, Section 3 Qualifications of a Trustee.

### SECTION 3. QUALIFICATIONS.

No person shall be eligible to become or remain a trustee of the Cooperative who:

1. Is not a member and taking electric service in the area served or to be served by the Cooperative;
2. Is in any way employed by or financially interested in a competing enterprise or a business selling electric energy or supplies to the Cooperative, or a business primarily engaged in selling electrical or plumbing appliances, fixtures or supplies to the members of the Cooperative; or
3. That has a close family member that is an employee

of the Cooperative. A close family member means a spouse, parent, child, sibling, grandchild, grandparent, aunt, uncle, niece, nephew and the same for in-law and "step" relationships.

Upon establishment of the fact that a trustee is holding office in violation of any of the foregoing provisions, the Cooperative's Board of Trustees shall remove such trustee from office.

Nothing contained in this section shall affect in any manner whatsoever the validity of any action taken at any meeting of the Board of Trustees.

## Attend Annual Meeting at the Remote Location Closest to You

As a member of Wheatland Electric Cooperative, you have the opportunity to attend one of the most important meetings of the year. Please join us for your cooperative's 71st annual meeting. This year Wheatland is making it even easier for you to attend. In the past, the annual meeting has been held at a designated city in Wheatland's service territory (Scott City, Syracuse, Leoti, Tribune, Great Bend, Holcomb, Caldwell, etc.). Each year we rotate the annual meeting to a different district.

This year we will be in Great Bend, District 6. However, on the same day and time as the annual meeting, April 24, 2019, we will be having **CONCURRENT ANNUAL MEETINGS** at all other WEC office locations:

### District 1 – Scott City

Wheatland Broadband  
416 Main Street, Scott City

### District 2 – Leoti

Wheatland Electric office  
North Hwy 25, Leoti

### District 3 – Tribune

Wheatland Electric office  
310 Broadway, Tribune

### District 4 – Syracuse

Wheatland Electric office  
206 N. Main Street, Syracuse

### District 5 – Garden City

Wheatland Electric office  
2005 W. Fulton, Garden City

### District 7 – Harper

Wheatland Electric office  
906 Central, Harper

As a member in attendance at one of the satellite locations you will be able to:

- ▶ **Attend** the Wheatland Electric Annual Meeting in the district in which you live.
- ▶ **Nominate** from the floor at the annual meeting to present a different member as a candidate.
- ▶ **Vote** for the upcoming trustees and on proposed bylaw amendments.
- ▶ **Win** a door prize!

Lunch will be provided at the Great Bend site and each satellite location.

The strength of our cooperative comes from our informed and concerned members. So, mark your calendars and plan to attend Wheatland Electric's Annual Meeting at the Great Bend Events Center or at any one of our six district offices.

## Wheatland Electric's

# 2019 Annual Meeting

## Wednesday, April 24

Registration at 10:30 a.m.

Lunch at 11:30 a.m.

Meeting at 12:30 p.m.  
(all times central)

**Attend at any one of the concurrent  
annual meetings closest to you!**





# Line

## WE APPRECIATE

### LINEWORKER APPRECIATION DAY

**Lisa** You guys are the best!! I know that we, as a community, are very grateful for our linemen!!  
 Like · Reply · Message · 8w

**Brenda** Thanks for all you do and be safe!  
 Like · Reply · Message · 3w

**Michelle** Much appreciation and thankfulness to you and all who work in horrible weather to make the rest of us safe and comfortable.  
 Like · Reply · Message · 9w

**Roelfina** I appreciate so much what you all are doing for your customers in that nasty weather yesterday. You all rock, thank you all so much!!!  
 Like · Reply · Message · 9w

**Russ** Prayers for our heroic lineman today and many thanks from this customer!  
 Like · Reply · Message · 6d

**Robin** HUGE Thank You's to all who was out working today to restore our power.  
 Like · Reply · Message · 9w

Although we only take one day out of the year to formally say “thank you” to our linemen, safely delivering energy requires hard work and sacrifices 365 days a year. On April 8, Wheatland Electric will join cooperatives from across the nation to celebrate Lineworker Appreciation Day. On that day, we will proudly recognize the 73 linemen at Wheatland Electric for everything they do throughout the year. We would also like to say “thank you” to all the past linemen who have contributed to the strong electrical infrastructure that ensures safe and reliable power to our homes.

This winter, we were especially thankful for the men who kept the power on and our heaters running. Anytime we would post pictures or videos to our social media accounts of linemen working in blizzard conditions, the outpouring of gratitude was overwhelming. It takes a special individual to work with their bucket raised high in the air while winds are howling and snow is falling, but that speaks to the level of commitment our linemen have to serving our members.

Working safely and in remote areas are two of the biggest challenges our linemen face. Wheatland has taken many steps to ensure our safety equipment and training are in line with the top of industry standards. As part of Wheatland’s Commitment to Zero Contacts initiative, linemen were encouraged to carry a Commitment Coin in their pockets while at work. These coins serve as a constant reminder of why they work safely. Director of Safety and Compliance Quinten Wheeler said, “The coins have been great. When the guys are out working and stick their hand in their pocket, they feel that coin and it serves as a reminder of why to stay



# men

## ATE YOU

### ATION DAY APRIL 8

safe and who is counting on them to come home that night.” We are used to remote spaces in Kansas, and our linemen are used to servicing those areas. Currently, Wheatland’s service territory covers over 4,600 square miles. That pencils out to 63 square miles per lineman. To effectively service an area this large, our linemen depend on teamwork and working long hours to serve our members.

The next time you see Wheatland linemen—be sure to thank them for keeping the lights on. But more importantly, thank them for the hard—and often times dangerous—work they do, day in and day out.

Use #ThankALineworker in your social media posts on April 8 to show support for all lineworkers whose hard work make our lives easier.



Journeyman Lineman Cody Ellis repairing lines after they were damaged during a storm this winter.



Lineman Apprentice Parker Fleming completes his annual pole-top rescue certification.

# Can You Dig It?



An underground utility line is **damaged once every 6 minutes** because someone didn't call 811.



Call 811, the "Call Before You Dig Number," at least **2 business days** prior to digging.



Even if you have previously had underground utilities marked, **utilities can shift**, so it's best to call before starting a new project.



811 locators **do not mark privately owned lines**, underground sprinkler systems, invisible fences, data communication systems, Call a private locator for these.



Once **all of your utilities** have been located, then you can start your digging project!

**Learn more at [safeelectricity.org](http://safeelectricity.org)**

## It's Annual Meeting Time *Continued from page 16A* ▶

prizes. **I'M LOOKING FORWARD TO SEEING YOU THERE.**

Before I close, **ELECTRIC COOPERATIVES WILL CELEBRATE LINeworker APPRECIATION DAY ON MONDAY, APRIL 8.** Wheatland linemen are incredibly talented and dedicated. They risk their lives every day, so

we can all enjoy the benefits and conveniences that electricity brings to our daily lives. I want to say thank you to each and every one of our linemen, thank you for your hard work and dedication to keeping the lights on, and it's a pleasure to be able to lead you.

***Until next time, take care.***

## Wheatland to Award \$14,000 in Scholarships

Wheatland Electric will announce the winners of its 2019 scholarship program at its 71st Annual Meeting on April 24 in Great Bend. Wheatland will give away a total of \$14,000.

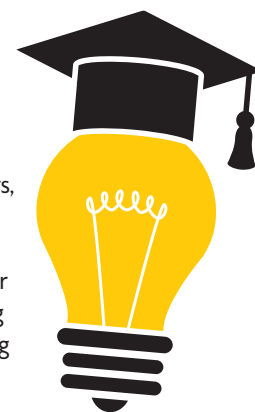
Recipients were judged on their academic performance, school activities, career goals and a 1,000-word essay. The Wheatland Board of Trustees again voted to make one \$1,000 scholarship available to each of the high schools in Wheatland's service territory for 2019. Eligible high schools are: Argonia, Caldwell, Chaparral, Conway Springs, Deerfield, Great Bend, Greeley County, Holcomb, Norwich, Scott County, South Haven, Syracuse and Wichita County. They also voted to create an at-large scholarship for children of Wheatland members who do not attend one of those 13 schools.

More than 55 students applied for the scholarships. The \$1,000 awards will go to students who plan to attend an accredited two- or four-year college, technical or vocational school. Once the winners are announced, Wheatland

will write checks directly to their schools of choice.

In addition to unveiling its scholarship recipients, Wheatland has several other activities planned for the April 24 meeting including announcing the winners of the Electric Cooperative Youth Tour and the Cooperative Youth Leadership Camp trips and voting for 2019-2020 members of the Wheatland Board of Trustees. Lunch will be provided for everyone who attends the meeting.

Members will receive a gift and can enter a drawing for great door prizes. Wheatland's annual meeting provides a great opportunity for members to learn more about their cooperative, ask questions and have a voice in their electric cooperative.



Committed to the job.  
Committed to safety.  
Committed to you, our members.

**Lineworker Appreciation Day**  
April 8, 2019







# youth tour starts **HERE**

## Meet Wheatland's Youth Tour Winners



**DELANEY MAYO**  
Caldwell - DC Winner

**Where are you from and what school do you attend?**

I am from Caldwell and attend Caldwell High School.

**Name two things you would like us to know about you.**

During the school year I love to keep active by competing in fall, winter and spring sports. I also am addicted to coffee and have a major sweet tooth.

**What is your favorite subject in school?**

My favorite subject in school is chemistry or any other science subject.

**What are your future plans?**

My future plans are to attend college to get a degree in pharmaceutical medicine or specialize in neonatal care.

**How did you hear about the program and what made you decide to apply?**

I heard about the program from my school counselor and previous students who have gone on the trip.

**What are you most looking forward to on your trip?**

I'm most looking forward to meeting many new people and seeing the White House.



**OLIVIA MULL**  
Great Bend - DC Winner

**Where are you from and what school do you attend?**

I am from Great Bend and I attend Great Bend High School.

**Name two things you would like us to know about you.**

I love to read, and I love Mexican food!

**What is your favorite subject in school?**

My favorite school subject is science.

**What are your future plans?**

I plan to go into pre-medicine so I can be a doctor.

**How did you hear about the program and what made you decide to apply?**

I heard about this program from my school counselor and I decided to apply so I could expand my horizons and develop better leadership skills.

**What are you most looking forward to on your trip?**

I am most looking forward to meeting new people on this trip and making new friends!



**TORI POE**  
Norwich - Camp Winner

**Where are you from and what school do you attend?**

I am from Norwich and I attend Norwich High School.

**Name two things you would like us to know about you.**

I have a passion for participating in athletics, especially track. I am a fan of dogs, chocolate and Chris Pratt.

**What is your favorite subject in school?**

I enjoy every subject in school, but my favorite is English.

**What are your future plans?**

I am unsure of what career or major I will pursue, but I plan to attend a Kansas college and participate in track.

**How did you hear about the program and what made you decide to apply?**

I heard about the program through my school counselor, and I decided to apply because it sounded like a great opportunity to represent myself and my school!

**What are you most looking forward to on your trip?**

I am looking forward to meeting people and making friends!



**FABEL YANEZ**  
Tribune - Camp Winner

**Where are you from and what school do you attend?**

I am from Tribune and attend Greeley County High School.

**Name two things you would like us to know about you.**

I enjoy running and playing basketball as well as listening to music.

**What is your favorite subject in school?**

My favorite subject in school is science.

**What are your future plans?**

After graduating I plan on going to college and hopefully will be running there too.

**How did you hear about the program and what made you decide to apply?**

I first heard about it when my sister applied to it, but then my school counselor mentioned it to me again.

**What are you most looking forward to on your trip?**

Opening up more and meeting new people.

# Sharing Success Awards \$4,000 in Grants

Wheatland Electric's Sharing Success Fund, managed by the Scott Community Foundation, recently awarded four \$1,000 grants to non-profits in its service territory.

The first \$1,000 grant went to Agora, Inc. Agora, Inc. submitted their request for the \$1,000 grant to help establish the newly created service organization.

Agora, Inc. was created with the specific purpose of providing service to the community while allowing for the continued use of the Presbyterian Church for worship. The concept of the service center was lifted from the historic heritage of the Presbyterian Church being used for community events in the past.

The second grant for \$1,000 was awarded to the Caldwell Opera House. The Caldwell Historical Society submitted their request for the \$1,000 grant, which would help with the replacement of the roof, installment of a larger drain box and repairs of a crumbling wall at the Caldwell Opera House.

Located at the corner of Main and Central in Caldwell is the Opera House. Original construction began in 1879 and housed Caldwell's first Opera House. Its main use was for entertainment, but it also housed a bank. The Opera House has a very colorful history, including shootouts between the citizens of Caldwell and cowboy outlaws. The building slowly deteriorated over the years and was eventually purchased by the Caldwell Historical Society. It was renovated with the help of private donations, fundraisers and matching grants. This grant will aid in a portion of these repairs to preserve this great historical piece of Caldwell.

The third grant for \$1,000 was awarded to the Harper Art Association. The Harper Art Association submitted their request for the \$1,000 grant to help with the costs of a new HVAC system for the Depot in Harper.

The Harper Art Association meets monthly in the Depot, weather permitting. The Depot is an actual train depot that was moved to Harper in the early 1960s. It has never been heated or air-conditioned. The temperature fluctuations have taken a toll on the more than 100 paintings, drawings, weavings and other works of art located in the building. This grant will benefit the Harper Art Association in addition to many community groups utilizing the space.

The fourth grant for \$1,000 was awarded to Circles of Central Kansas. Circles of Central Kansas submitted their request



Charles Ayers (left) and Margaret Pritchard (right) accept a Sharing Success Grant from Nolan Numrich, member services and key accounts manager.

for the \$1,000 grant to help supply weekly meals to families involved in the program, purchase curriculum for new participants and help with supply costs for coaches.

Circles of Central Kansas is a poverty-based resolution program located in Great Bend. It is committed to providing resources for individuals working their way out of generational poverty. Great Bend has had two graduating classes thus far with a third class beginning in April 2019. The \$1,000 grant will help individuals rise above the federal poverty line.

The Scott Community Foundation began accepting applications for grants from the Wheatland Electric Sharing Success Fund from non-profit organizations on Dec. 1, 2012. Wheatland Electric and CoBank have contributed an additional \$5,000 each year to the fund. The program will continue to run until the funds are exhausted. Non-profit groups interested in applying for Wheatland Electric Sharing Success funding should contact Alli Conine, manager of member services and corporate communications, 620-874-4563 or [aconine@weci.net](mailto:aconine@weci.net), for more details.

## SAFETY Tip of the Month

Mold can build up in cold, dark, damp places around your home. Spring is a smart time to inspect your house. We recommend checking areas where ventilation is restricted and where moisture accumulates. If you find mold, call a professional to further identify the problem and eliminate the mold.